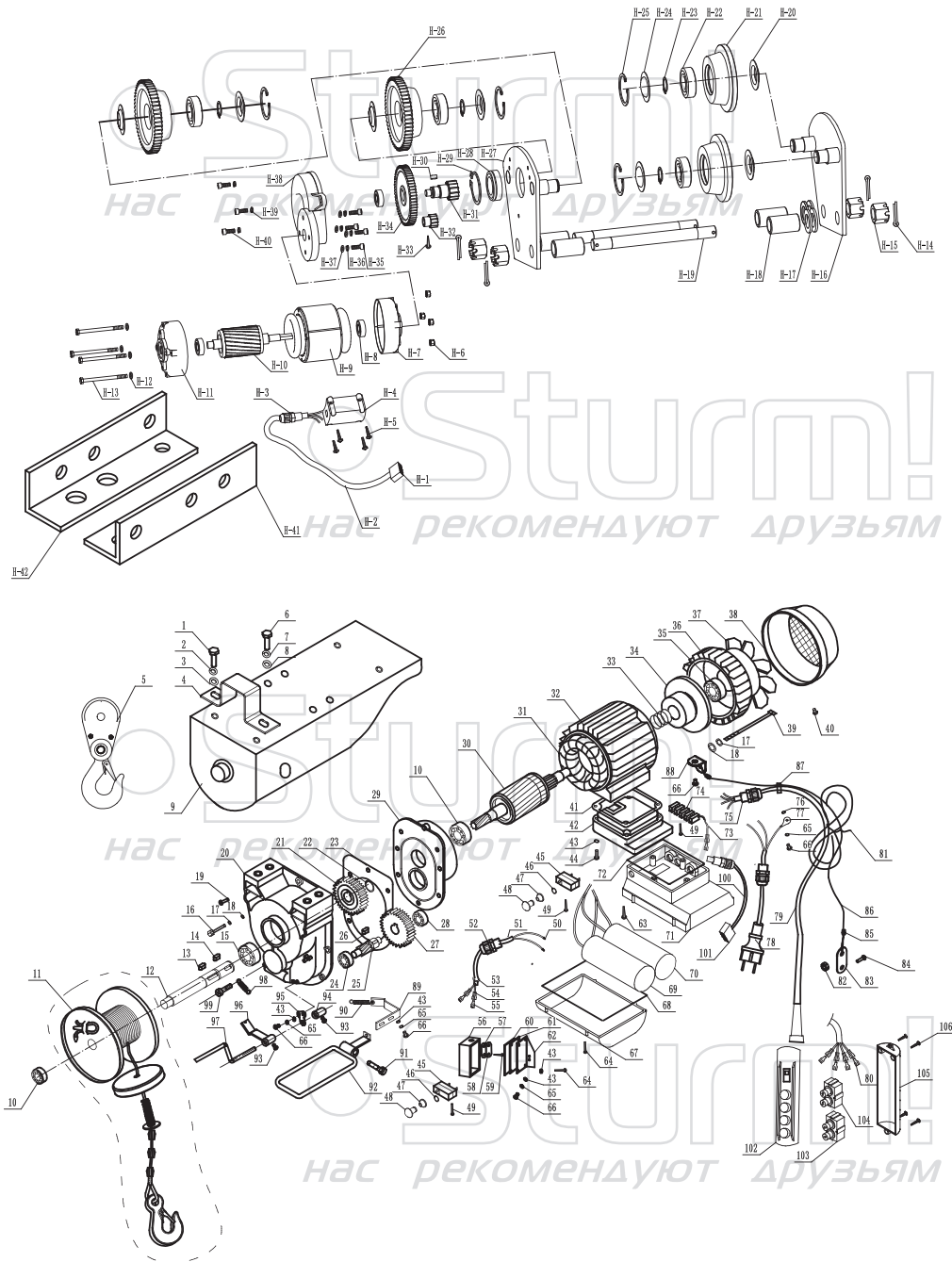


# EH72401



NO.	DESCRIPTION	NO.	DESCRIPTION	NO.	DESCRIPTION
1	Outer hex bolt	54	Plug-in reed jacket	H-1	Connection assembly (head)
2	Washer	55	Plug-in reed	H-2	cable line
3	Spring washer	56	Lower cover of down limit position box	H-3	Anti-kink device of cable line
4	Fasten clamp	57	Plate (paper washer)	H-4	Hc of junction box
5	Polly assembly	58	press cord plate	H-5	Cross pan head screw
6	Outer hexagon bolt	59	Cross pan head tapping screw	H-6	Nut
7	Spring washer	60	Seal ring	H-7	Motor front cover
8	Washer	61	Up cover of down limit position box	H-8	Rolling bearing
9	Housing cover	62	Fixing plate	H-9	Stator (hc)
10	Rolling bearing 6204	63	Cross pan head tapping screw	H-10	rotor (hc)
11	Rope bobbin assembly	64	Cross pan head tapping screw	H-11	motor rear cover
12	Socket shaft for rope drum	65	Spring washer	H-12	Flat washer
13	Flat key	66	Cross pan head screw	H-13	Cross pan head screw
14	Flat key	67	Up cover of junction box	H-14	Opening pin
15	Rolling bearing 6205	68	Up airproof loop of junction box	H-15	Nut
16	Screw	69	Capacitor	H-16	Defender 1
17	Spring washer	70	Capacitor	H-17	flat washer
18	Washer	71	Middle cover of junction box	H-18	Tube
19	Cross pan head screw	72	Middle airproof loop of junction box	H-19	Double head screw
20	Gear box	73	Guiding line	H-20	Bearing cover
21	Small gear	74	Connection ending	H-21	Wheel
22	Snap ring	75	Anti-kink device of cable line	H-22	Rolling bearing
23	Paper washer	76	Tooth washer	H-23	Snap ring
24	Rolling bearing	77	Terminal piece	H-24	Bearing cover
25	Gear driving shaft	78	Waterproof plug and cable line	H-25	Snap ring
26	Flat key	79	Cable line	H-26	Gear
27	Big bevell gear	80	Plug-in reed	H-27	Defender 2
28	Rolling bearing	81	Binding	H-28	rolling bearing
29	Front housing cover	82	Nut	H-29	Snap ring
30	Rotor	83	Brackets ( straight )	H-30	Flat key
31	Stator	84	cross pan head screw	H-31	Gear driving shaft for hc
32	Motor housing	85	Aluminum buckle	H-32	Small gear for hc
33	Brake spring	86	Steel wire rope	H-33	Cross pan head screw
34	Brake assembly	87	Binding	H-34	Big gear for hc
35	Rolling bearing	88	Brackets ( bending )	H-35	Socket screw
36	Back housing cover	89	tie-in of position limited switch	H-36	Spring washer
37	Fan	90	Reed of position limited switch	H-37	Washer
38	Fan cover	91	Socket screw	H-38	Gear box for hc
39	Outer hex bolt	92	Position limited bracket	H-39	Socket screw
40	Cross pan head screw	93	Outer hex bolt	H-40	Spring washer
41	Lower airproof loop of junction box	94	Sleeve for down limited position pole	H-41	Crane railer (left)
42	Lower cover of junction box	95	Limited position slice	H-42	Crane railer (right)
43	Flat washer	96	Down limited position pole		
44	Cross pan head screw	97	Down limited position pole		
45	Position limited switch	98	Up reed of position limited switch		
46	Snap ring	99	Cross pan head screw		
47	Button spring loop	100	Cable line		
48	Position limited button	101	Connection assembly		
49	Cross pan head tapping screw	102	Control box assembly		
50	Coper head of position limited cable line	103	Direction switch		
51	Cable line	104	Up and down switch		
52	Anti-kink device of cable line	105	Control box rear cover		
53	Ring	106	Cross pan head screw		